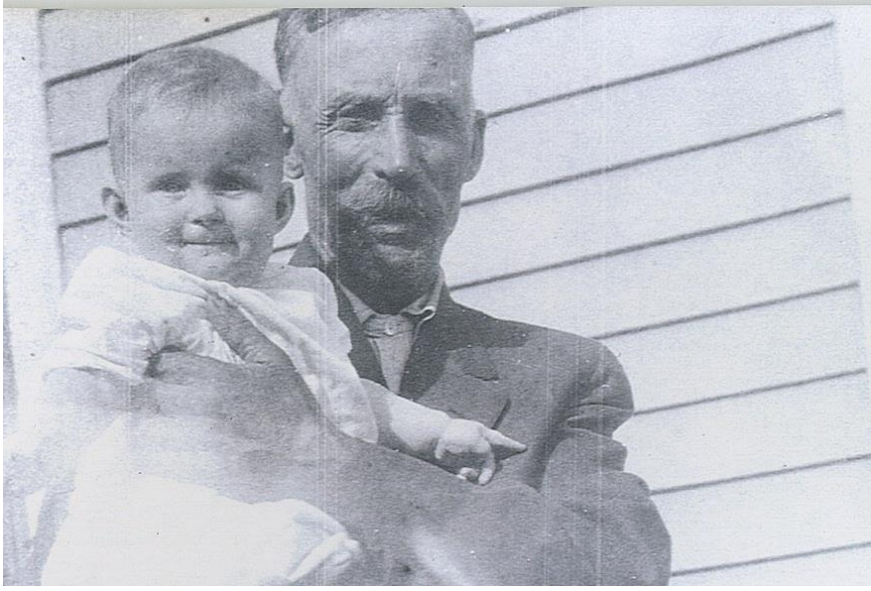


# GRANDPA BENNETT FAGERNESS



**Grandpa Bennett Fagerness**

Bennett Fagerness's grandfather was Lars Fagerness who in 1841 lived on the Fagerness farm on Lake Mojsa in Eidsvold, Norway. The firstborn was a son, Hans, who was Bennett's father. He was born on Sept. 20<sup>th</sup>, 1841. Lars lost the farm and then moved to Sandvigen where the rest of Lars's children were born. The family stayed in Sandvigen, Norway when Hans left to take his family to America in 1881.



**Hans Fagerness, father of Grandpa Bennett.**

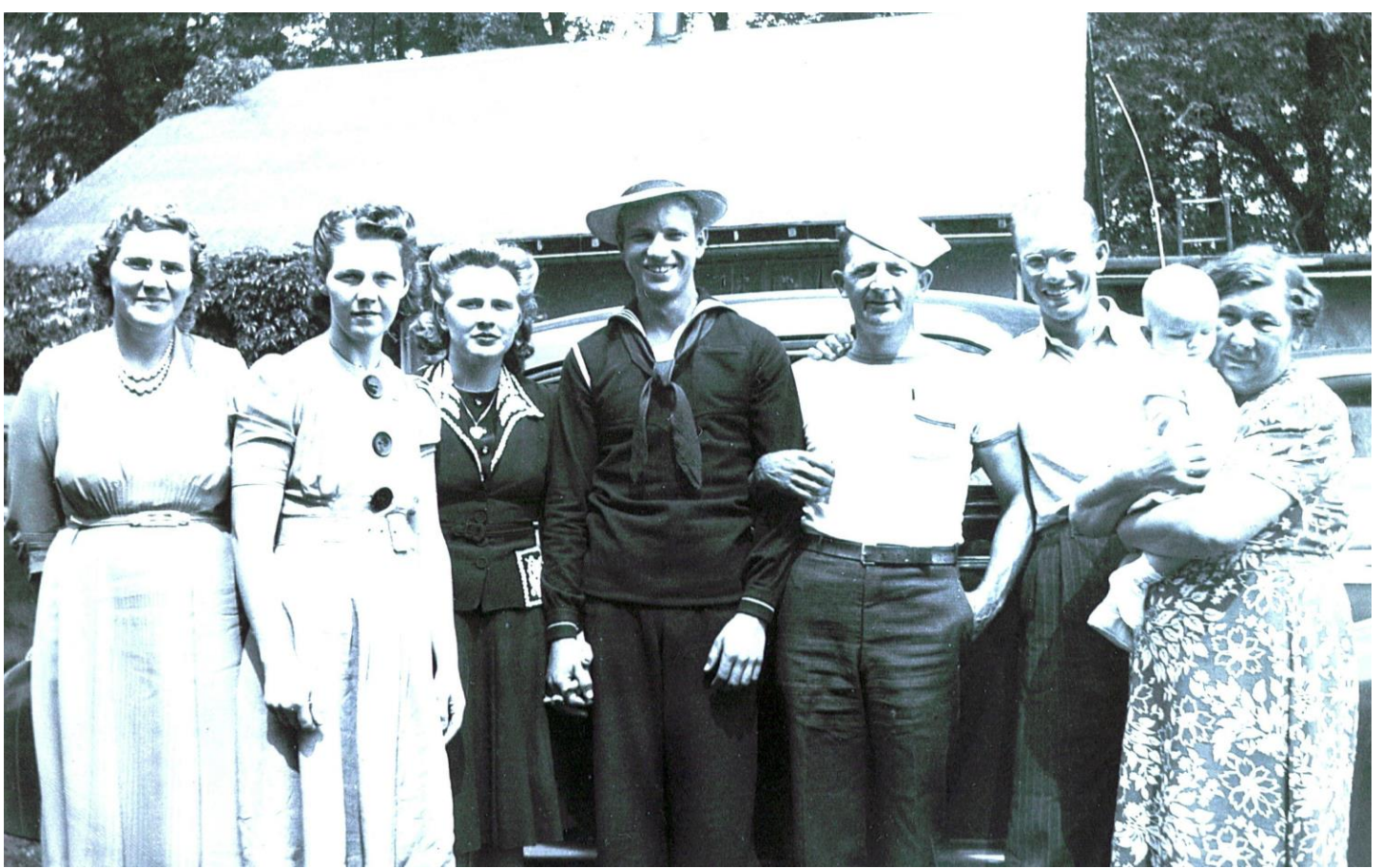
Before going to America, Hans Larson Fagerness, Bennett's father, moved to Torgensrud where he managed a farm for a wealthy landowner. He was married at Torgensrud to Ingerborn Hanson. Ingerborn Hanson was born August 22, 1828. Their first three children were born at Torgensrud. They were Bennett in 1860, Stephan 1866, and Christian 1868. They then moved to Feiring where the last two were born, Martin 1872, and Agnes 1874. Bennett first worked as young man as an Engineer on a boat on Lake Mjoss, Norway. In 1881, when Bennett was 21, the entire Hans Fagerness family moved to America. They arrived at New York and then went to

Mankato Minnesota. They could not go straight to Adrian as flooding washed out the railroad. On May 5, 1881 they arrived in Adrian. Hans got a job on the railroad and in 1883 moved his family to Rushmore. Hans first worked as a section hand and later a section boss until he retired. Hans's wife, Ingerborn, died at age 82 on January 25, 1910. Hans then went back to work on the railroad at the age of 72. He died January 20, 1927 at the age of 86.



**Bennett and Maria Fagerness wedding**

Bennett, our grandfather, also got a job on the railroad after the family moved to Rushmore. He married Maria Langseth in 1894. Bennett then built a house in Rushmore on the corner of Third Avenue and Seney. They had four children, Melvin, Elsie, William and Alma. The family moved to the 20 acre farm south of Rushmore shortly after Alma, their last child was born in 1902. They also bought and farmed 160 acres nearby. In 1907 Bennett's first wife died from complications during childbirth. In 1909 Bennett moved the house and barn from the 20 acre farm to the 160 acre farm. He lived there until 1932.



**The Bennett and Anna Fagerness family in 1942. From the left: Margaret, Laura Olson, Armella, Lee, Cliff Olson, Don, Howard Olson and Grandma Fagerness. Grandpa Bennett died in 1939.**



**Agnus Dahlberg, Grandpa Bennett's sister. She lived next to my family in Rushmore. She died at the age of 97.**

**Bennett married Anna Jepson in 1914. They had four children Margaret, Laura, my father Lee and Don. Bennett's family stayed on the 160 acre farm until 1932 when the depression hit. The bank was going to auction his farm but his sons Melvin and Bill intervened and settled with the bank. At age 72 Bennet retired and his son Melvin then took over the 160 acre farm. Bennett then moved back to the 20 acre farm where he lived until his death in 1939 at age 79. Bennett died from pneumonia. His obituary read in the Rushmore Enterprise on August 31, 1939: Mr. Fagerness was confirmed in the Lutheran faith when a young man and joined the Lutheran church of this place. Mr. Fagerness was a kind father, and was loved and respected by all who knew him. He endured his illness patiently until death came to relieve him of his sufferings.**

**Note: Grandpa Fagerness never lived in a home with electricity or running water. What did that mean: outhouses, kerosene lanterns, an icebox, a wood stove for heat and cooking, a wash board for laundry, hauling in all water from the outside well, no showers, and no radio or TV.**