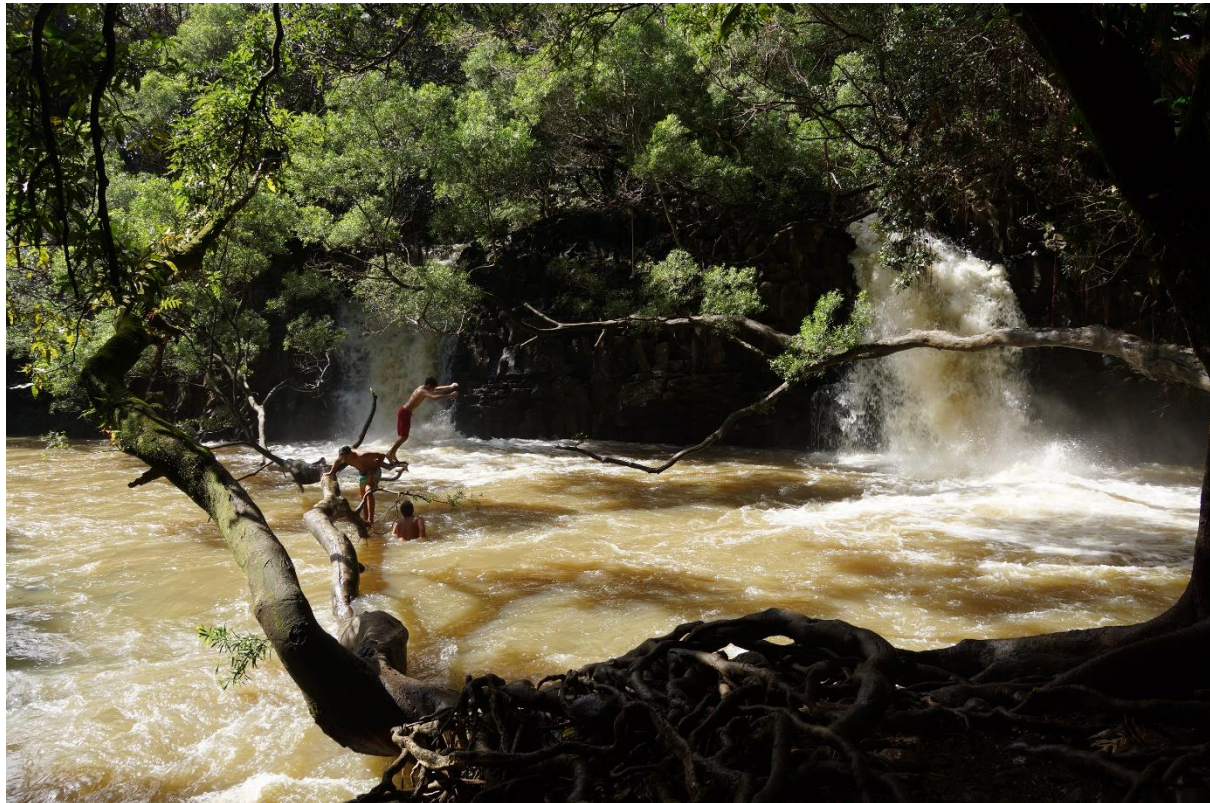


Road to Hana on Maui Hawaii



The road to Hana is lined with trees, curvy roads and 54 bridges.



The first waterfalls are the Twin Falls.



There are dozens of waterfalls along the road to Hana. Some with daredevils.





The 80' Wailua Falls near the 7 Sacred Pools.



The shoreline along the road to Hana. Below a huge Poinsettia bush in Hana.





Above: One of 3 rest stops on the road to Hana. Below: Typical tropical vegetation along the road.

